

Facts to know during construction of the Eastern Busway

Building the busway safely and in a way that minimises disruption is our priority and part of our commitment to being good neighbours.

Access to properties, shops, restaurants and car parks

Ensuring you can get around safely is important. Our team communicates regularly with residents and businesses to discuss and agree road layout changes and temporary and permanent routes. We keep our neighbours informed through letters, emails, pop-in sessions, website updates and signs.

Noise and vibration

Construction activities and equipment can generate noise and vibration. We measure and manage both to ensure they are within the allowed limit and to the standard expected of large projects. Some of the ways we mitigate our impacts include:

- using equipment with low noise and vibration emissions
- avoiding dropping materials from height
- installing sound barriers in the noisiest areas where possible
- scheduling activities considerately.

People have a range of sensitivity to vibration from construction. While vibration can be felt by neighbours and may cause some concern, it's uncommon for it to cause damage to properties or exceed limits. We work closely with the community to provide respite from construction-related impacts.

For detailed information on noise and vibration, visit www.nzta.govt.nz/roads-and-rail/highways-information-portal/technical-disciplines/environment-and-sustainability-in-our-operations/environmental-technical-areas/noise-and-vibration/frequently-asked-questions/

Dust control measures

We manage dust through regular site inspections, spraying water and cleaning haulage routes. We load our trucks carefully and ensure any loose materials are covered. Our sites are monitored to assess how much dust is created and to manage it appropriately.



Detours, delays and traffic

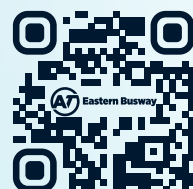
Traffic Management Plans outline how we minimise inconvenience and ensure the safety of everyone using the roads. Our traffic management team is on hand to assist, and signs communicate detours, delays and disruption. Working during the night helps to reduce our impacts during peak hours.

How to be updated

Stay informed about our progress by reading our weekly construction updates at easternbusway.nz/construction.

For more information please call **0800 287 929** or email info@easternbusway.nz

Thank you for your patience while we build the Eastern Busway.



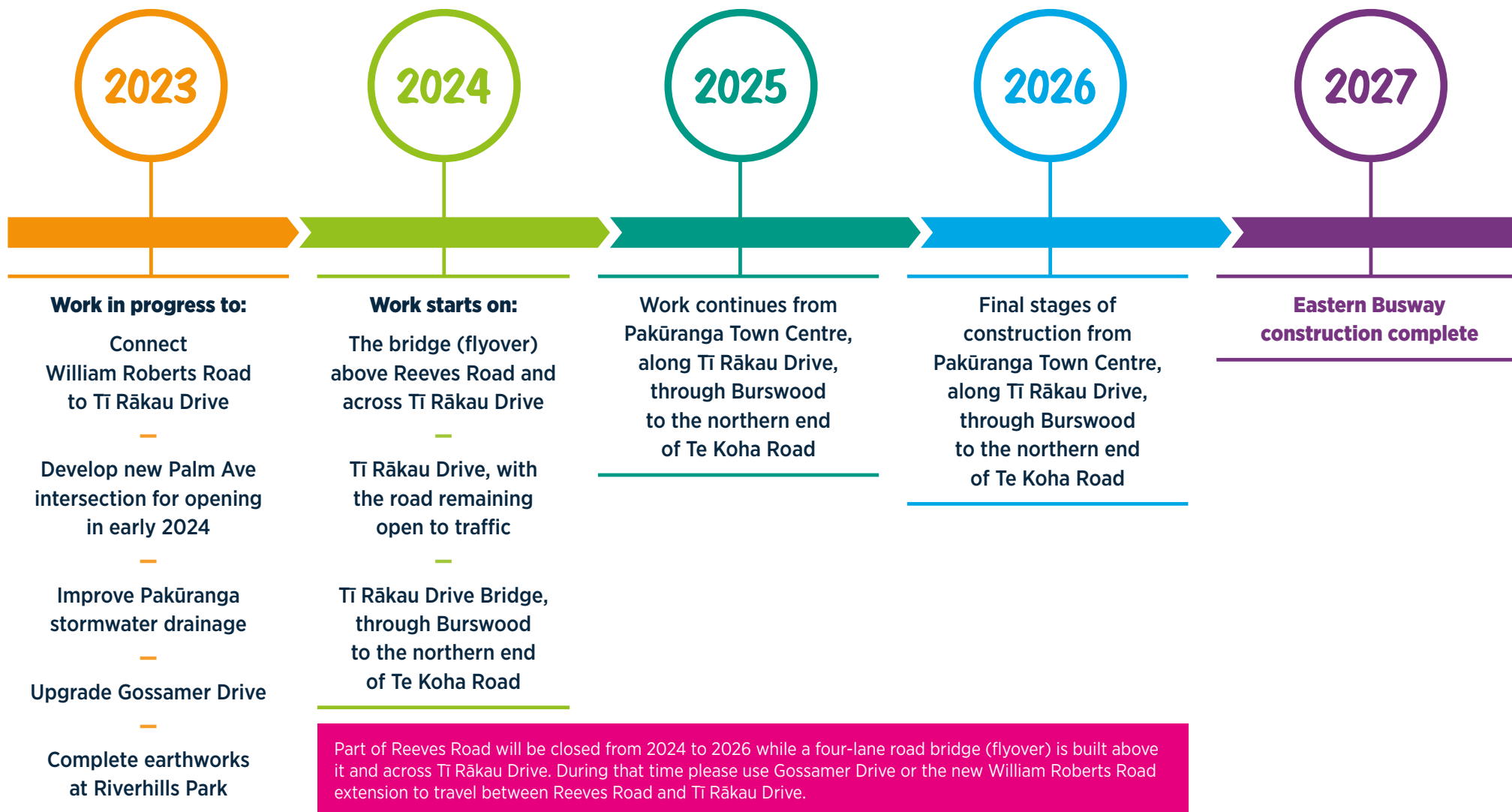
 easternbusway.nz

 info@easternbusway.nz

 **0800 BUSWAY (0800 287 929)**

CONSTRUCTION TIMELINE

Keep updated on project milestones through the construction timeline, summarising key activities until 2027.



Part of Reeves Road will be closed from 2024 to 2026 while a four-lane road bridge (flyover) is built above it and across Tī Rākau Drive. During that time please use Gossamer Drive or the new William Roberts Road extension to travel between Reeves Road and Tī Rākau Drive.