

# Eastern Busway

A rapid, reliable transport future for East Auckland

The Eastern Busway is a key part of Auckland's rapid transit network connecting East Auckland to the wider region. It gives people more travel choice and supports a growing region.



The first section of the Eastern Busway between Panmure Station and Pakūrangā is already open. When the Eastern Busway fully opens in 2027, it will extend all the way to Botany, providing a reliable 40-minute bus and train trip from Botany Town Centre to Auckland city centre at Waitematā Station. Combined with the opening of the City Rail Link later this year, you'll be able to get to even more places on public transport thanks to an interconnected bus and rail network.

The Howick Local Board area is Auckland's most populous, with a population of nearly 155,000 in 2021, growing to nearly 175,000 by 2025, and projected to exceed 190,000 by 2048 (Stats NZ). This growth will put more pressure on our road network, leading to congestion and longer travel times. Improved travel choice is critical in meeting the varying needs of all community members so everyone can enjoy our region now and into the future.

The Eastern Busway provides buses with their own lanes away from people travelling in other vehicles. This gives customers a high-quality transport service that is fast, frequent and reliable.

## Key features

- 5km of busway between Pakūrangā and Botany fully separated from other vehicles
- 5 new bus stations
- Rā Hihi – flyover above Reeves Road, providing a direct connection for people travelling between Pakūrangā Road, Pakūrangā Highway and onto the South Eastern Highway
- 12km of safe and separated walking and cycling paths

We recognise that construction of a major project like this requires short-term disruptions which impact the community. Our Customer and Community team is committed to working with our neighbours to minimise impacts and keeping people informed. Find out more about the type of construction activity the Eastern Busway team will be doing during 2026 over the page.

# What's happening in 2026

## Types of intersections

**Signalised intersection:** Uses traffic lights to control how vehicles, cyclists and pedestrians move through the intersection.

**Give-way intersection:** Has no traffic lights; controlled by give-way rules. Drivers must give way to other traffic before proceeding.

**Raised intersection (raised safety platform):** The road surface is elevated to slow vehicle speeds and improve safety for people crossing.

**Panmure to Pakūranga completed**

**Pakūranga Town Centre**

**Rā Hihi - flyover above Reeves Road**

**Gossamer Drive to Whakamaumahara Guys Reserve**

- Tī Rākau and Taupaepae bridge structures complete
- Signalised intersections on Burswood Drive (east and west)
- Construction of Pōhatu Station
- Construction of separate cycleway
- Burswood Park upgrade

**Whakamaumahara Guys Reserve to Botany Town Centre**

*Construction starts in March 2026 and continues until mid-2027*

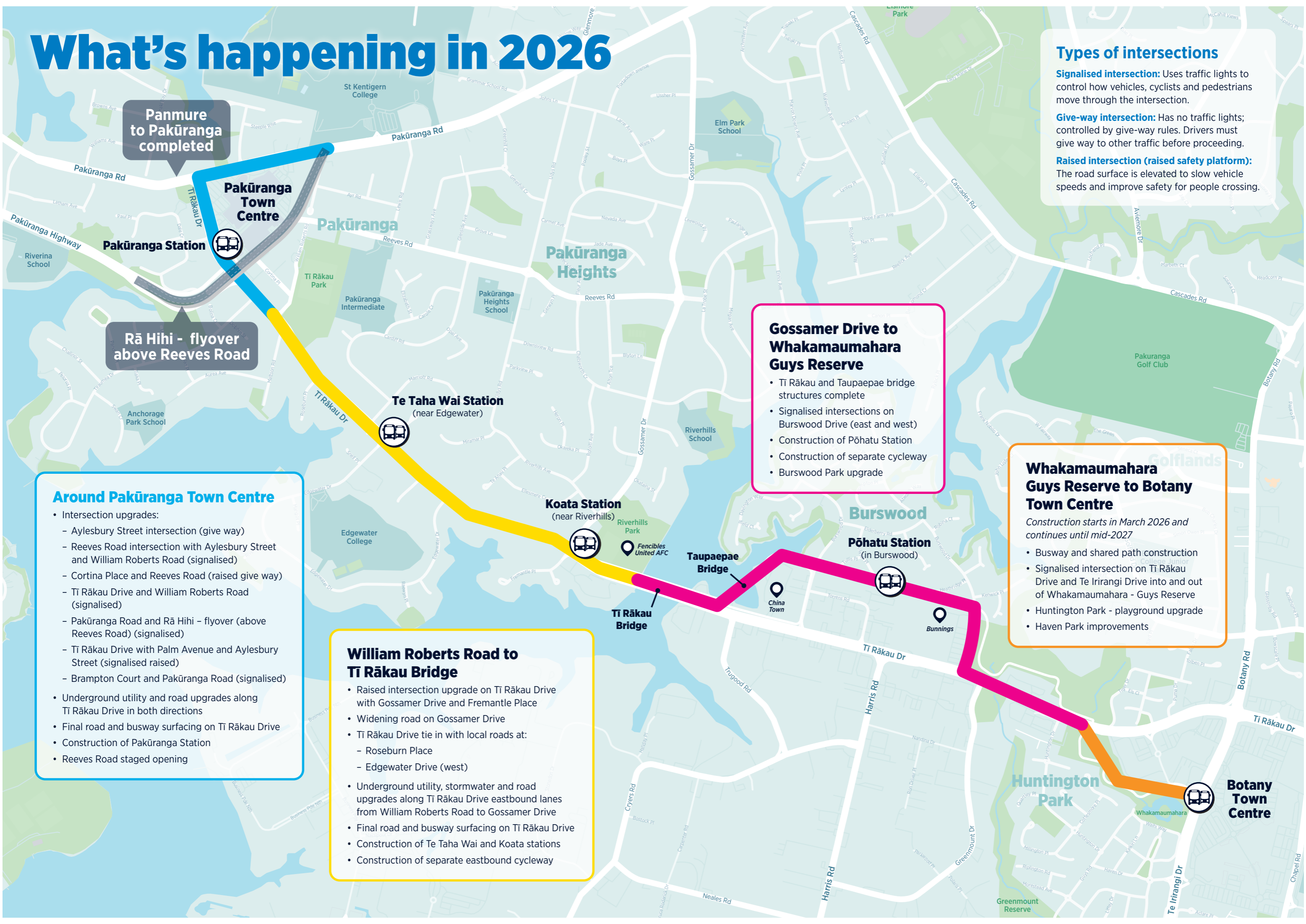
- Busway and shared path construction
- Signalised intersection on Tī Rākau Drive and Te Irirangi Drive into and out of Whakamaumahara - Guys Reserve
- Huntington Park - playground upgrade
- Haven Park improvements

## Around Pakūranga Town Centre

- Intersection upgrades:
  - Aylesbury Street intersection (give way)
  - Reeves Road intersection with Aylesbury Street and William Roberts Road (signalised)
  - Cortina Place and Reeves Road (raised give way)
  - Tī Rākau Drive and William Roberts Road (signalised)
  - Pakūranga Road and Rā Hihi - flyover (above Reeves Road) (signalised)
  - Tī Rākau Drive with Palm Avenue and Aylesbury Street (signalised raised)
  - Brampton Court and Pakūranga Road (signalised)
- Underground utility and road upgrades along Tī Rākau Drive in both directions
- Final road and busway surfacing on Tī Rākau Drive
- Construction of Pakūranga Station
- Reeves Road staged opening

## William Roberts Road to Tī Rākau Bridge

- Raised intersection upgrade on Tī Rākau Drive with Gossamer Drive and Fremantle Place
- Widening road on Gossamer Drive
- Tī Rākau Drive tie in with local roads at:
  - Roseburn Place
  - Edgewater Drive (west)
- Underground utility, stormwater and road upgrades along Tī Rākau Drive eastbound lanes from William Roberts Road to Gossamer Drive
- Final road and busway surfacing on Tī Rākau Drive
- Construction of Te Taha Wai and Koata stations
- Construction of separate eastbound cycleway



# Frequently asked questions



## Why are you building a busway when most people in East Auckland drive?



Whether people choose to drive, bus, train or get around on foot and bike, providing transport choice helps meet the varying needs of Aucklanders. By 2048, it is expected that the busway will carry 24,000 passengers per day. By improving travel choice for everyone, we can reduce the number of cars on the road, easing the pressure for freight and people who need to travel by car.



Artists impression

## Why is construction taking so long?



The Eastern Busway Alliance started construction in 2023. Delivering the busway means we're working in one of the most complex engineering environments within Auckland.

Underground, there is a dense network of assets of national importance we need to work around including:

- The Hunua 2 watermain which provides water to the whole of Auckland
- Transpower electricity cables which supports electricity supply for Auckland and Northland
- Various telecommunication lines and stormwater pipes which must remain operational day to day

We're also working with Auckland Council (Healthy Waters) and Watercare to upgrade old stormwater and watermain pipes to improve flood resilience and support future growth at the same time as we build the busway.

Ti Rākau Drive is a main arterial road, carrying around 38,000 vehicles each day and helping people get to work, school, and the places they spend time with family and friends. We know that there's support for work to be completed faster but this would require us to close the road and this is something we're only able to do during quieter travel periods such as school and public holidays.

## Why are new intersections and traffic lights being installed?



The environment along Ti Rākau Drive is changing. More people will be moving around the area including pedestrians, cyclists, and people with accessibility needs. We need to make the road safer for everyone and ensure that buses can move quickly and easily to provide a reliable, enjoyable travel experience. Traffic lights at both new and existing intersections help manage the safe movement of people and support private vehicles travelling onto and across Ti Rākau Drive.

Raised safety platforms are being installed to calm the speed of traffic at areas where new bus stations or walking and cycling crossings will be located.

## When will the busway open?



Most of the busway will be built by the end of 2026 and it will be operational in 2027. The time between construction ending and opening the busway is used to undertake checks, tests, trials, and practise runs so that everything is safe and works as expected ahead of carrying the first passengers.

## Will the East Auckland bus network be updated before the busway opens?



Yes, before the Eastern Busway opens, a new bus network for East Auckland is being rolled out, providing more local bus feeder services and improved routes. This means that there will be greater connectivity with residential and commercial centres, across East Auckland, making it easier for more people to access the Eastern Busway.

## Is there a park and ride?

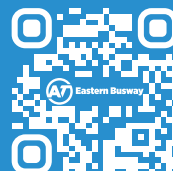


No park and ride facilities are being built as part of the Eastern Busway. Pakūranga Station will have a drop off/pick up zone and improved feeder bus options will make it easier for more people to access the Eastern Busway. Park and Rides are typically seen in lower density areas to service people who cannot access feeder routes.

If you have any questions about this information or would like to talk to the team, please contact us by calling **0800 287 929** or emailing [info@easternbusway.nz](mailto:info@easternbusway.nz)

If you'd like to receive a copy of this newsletter in Chinese, please email [info@easternbusway.nz](mailto:info@easternbusway.nz) and we'll send a copy directly to you.

如果您希望收到这份简报的中文版, 请发送邮件至[info@easternbusway.nz](mailto:info@easternbusway.nz), 我们会将中文版以电子邮件形式发送给您。



[easternbusway.nz](http://easternbusway.nz)

[info@easternbusway.nz](mailto:info@easternbusway.nz)

0800 287 929